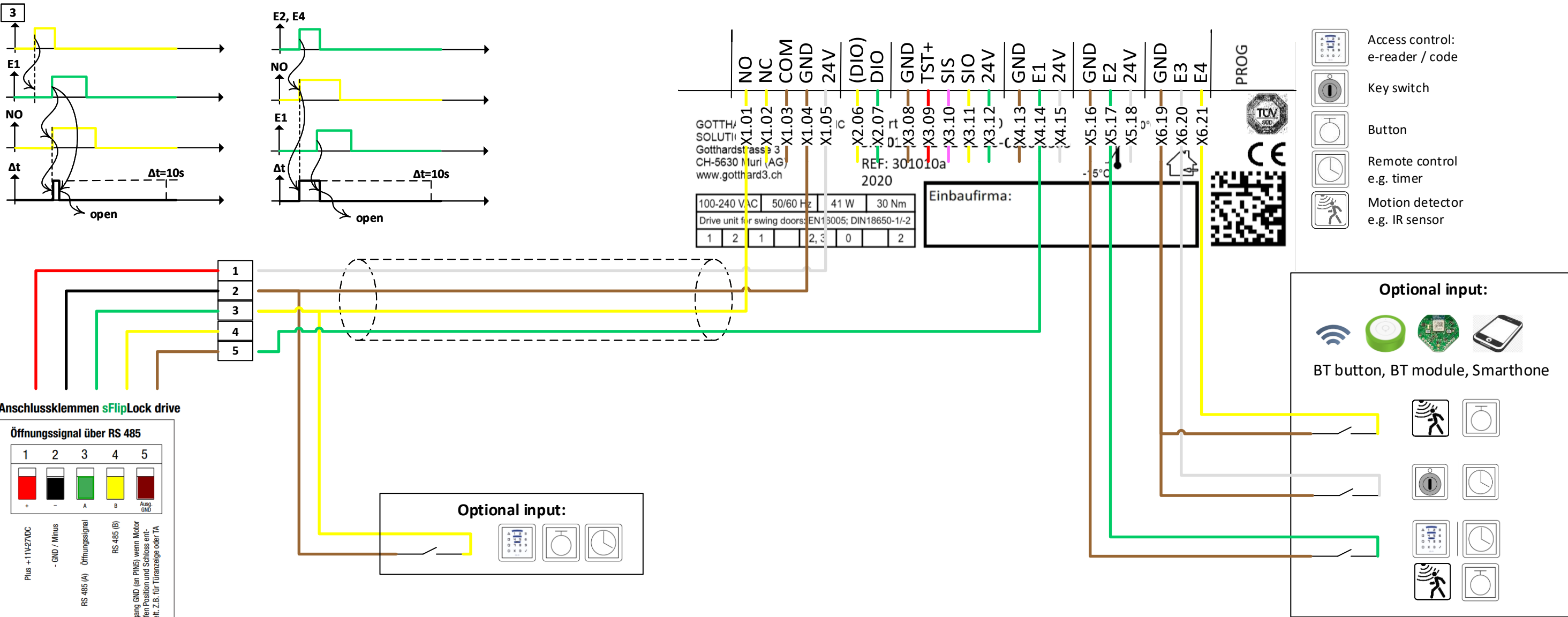


electrical diagram MSL sFlipLock drive / e-drive with smartdoor TURN (Master – Master)



Anschlussklemmen sFlipLock drive

Öffnungssignal über RS 485

1	2	3	4	5
+	-	A	B	Ausg. GND

Plus +11V-27VDC
- GND / Minus
Öffnungssignal
RS 485 (A)
RS 485 (B)
Ausgang GND (an PIN3) wenn Motor in offen Position und Schloss entriegelt. Z.B. für Türanzeige oder TA.

Öffnungssignal über Batch, Zeitschaltuhr, usw.

1	2	3	4	5
+	-	A	B	Ausg. GND

Plus +11V-27VDC
GND / Minus
Öffnungssignal (GND)
z.B. Batch, Schaltuhr usw.
Ausgang GND (an PIN3) wenn Motor in offen Position und Schloss entriegelt. Z.B. für Türanzeige oder TA.

Achtung PIN 3
Öffnungssignal GND - Potential

Parameter sFlipLock (e-)drive:

Parameter smartdoor TURN:	
Closing force	= individual
Push&Go (on/off)	= individual
Push&Go sensitivity	= individual
Lock function (active/ina.)	= ON
Opening force	= individual
Delay time	= 10s
Input E1	= opening pulse (day + night) + LF
Input E2	= opening pulse (day + night)
Input E3	= day/night operation
Input E4	= opening pulse (day only)

KAB-FLIP-NSPM Notstrompuffer-Modul zu FlipLock drive & e-drive

- Bestückte & geprüfte Notstromplatte
- Eingangsspannung: 12-24VDC
- Ausgangsspannung: direkt Motoreinheit FlipLock
- Anschlusskabel: 130mm (inkl. beschriftetem Stecker 1-5)
- Platine: Vergossen
- Masse (lxbxt): 85x17x23mm



Elektroschema MSL sFlipLock drive / e-drive mit smartdoor TURN (Master – Master)

Door operator
smartdoor TURN T100

MSL sFlipLock - smartdoor TURN_Elektroschema_v2.1.vsd

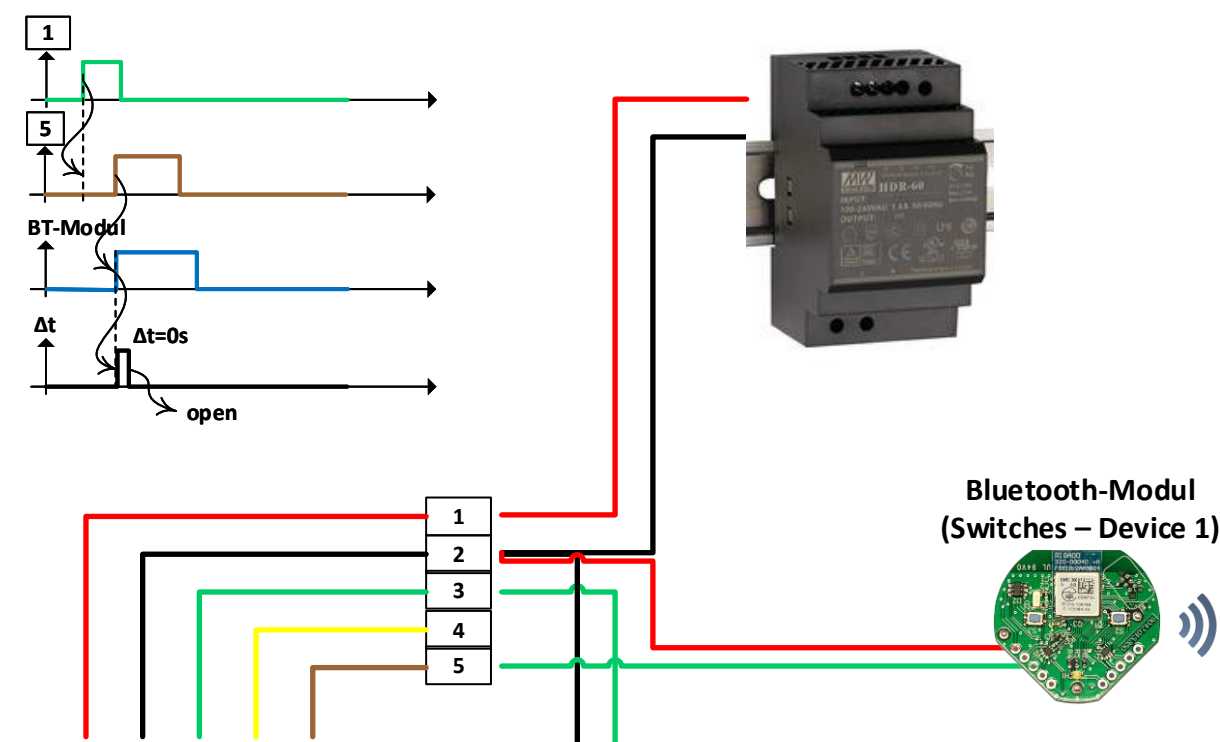
Blatt 1/3

20.10.2021

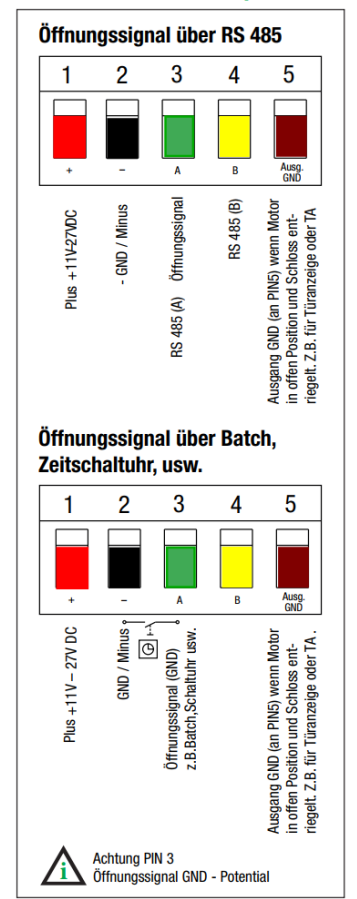
Peter
Kupferschmid

EN: English

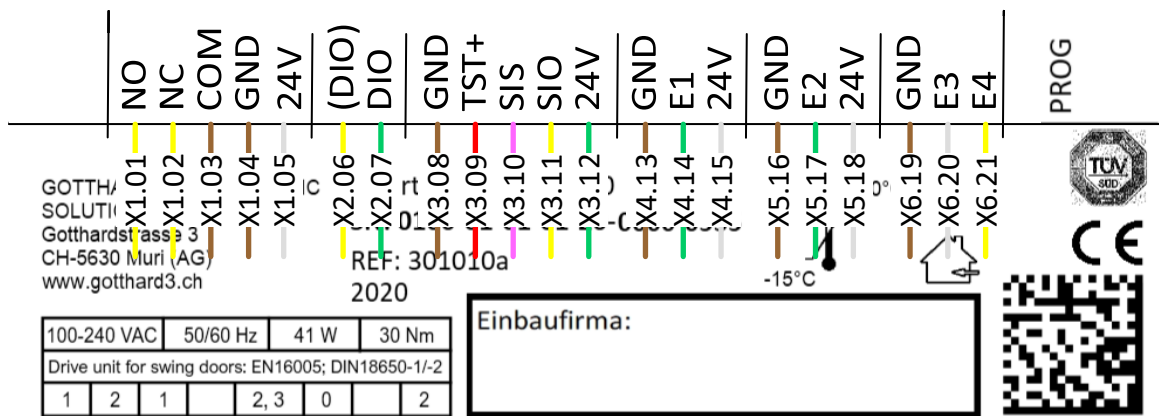
electrical diagram MSL sFlipLock drive / e-drive with smartdoor TURN (Master – Slave) v1



Anschlussklemmen sFlipLock drive

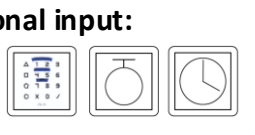


Parameter sFlipLock (e-)drive:



- Access control: e-reader / code
- Key switch
- Button
- Remote control e.g. timer
- Motion detector e.g. IR sensor

Optional input:



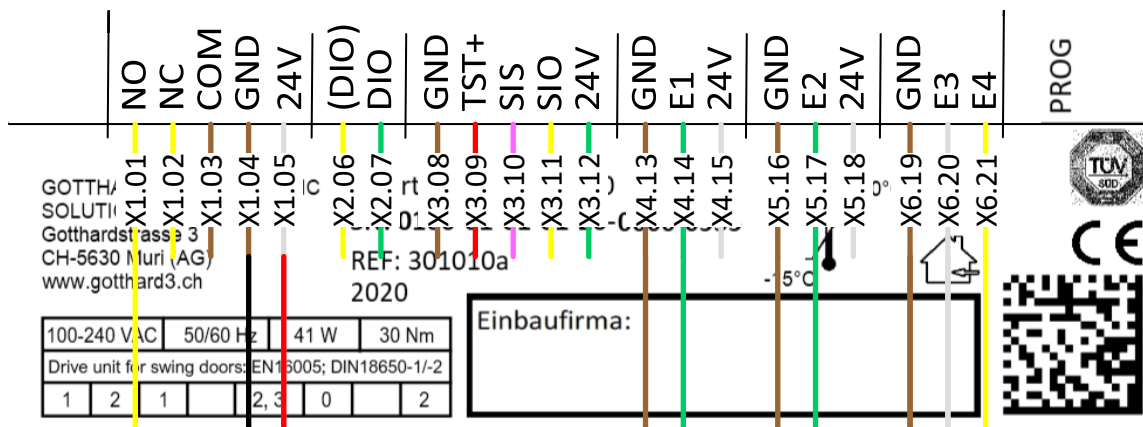
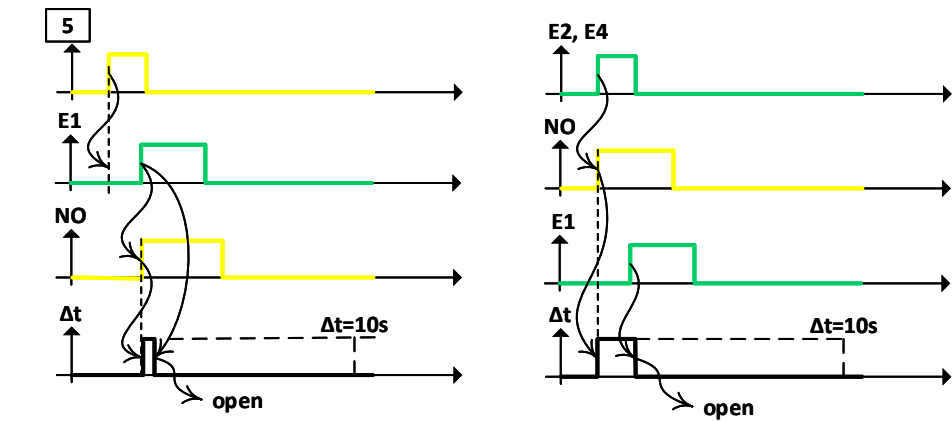
Parameter smartdoor TURN:	
Closing force	= individual
Push&Go on/off	= individual
Push&Go sensitivity	= individual
Lock function (active/ina.)	= OFF
Opening force	= individual
Delay time	= 0s
Input E1, E2, E3, E4	= NONE
Peripherie smartdoor TURN:	
Switches – Device 1	= activ, opening pulse (day + night)

KAB-FLIP-NSPM

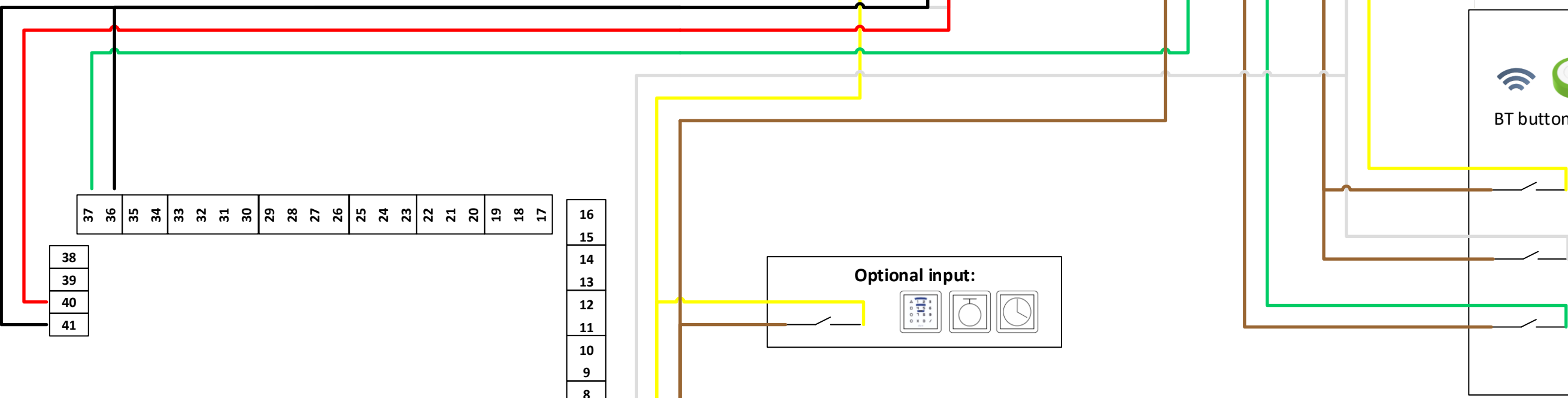
Notstrompuffer-Modul zu FlipLock drive & e-drive

- Bestückte & geprüfte Notstromplatine
- Eingangsspannung: 12-24VDC
- Ausgangsspannung: direkt Motoreinheit FlipLock
- Anschlusskabel: 130mm (inkl. beschriftetem Stecker 1-5)
- Platine: Vergossen
- Masse (lxbxt): 85x17x23mm

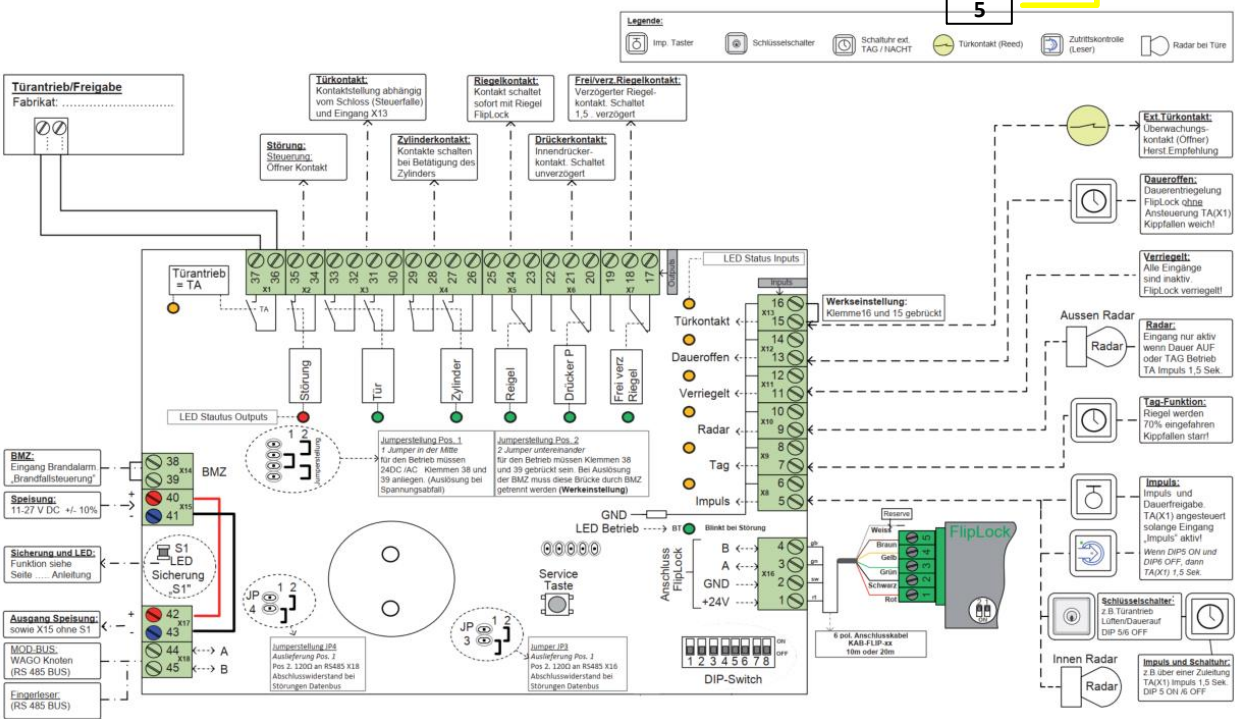
electrical diagram MSL sFlipLock access / e-access with smartdoor TURN



- Access control: e-reader / code
- Key switch
- Button
- Remote control e.g. timer
- Motion detector e.g. IR sensor



access 25574



Parameter sFlipLock (e-)access:

Parameter smartdoor TURN:

Closing force	= individual
Push&Go (on/off)	= individual
Push&Go sensitivity	= individual
Lock function (active/ina.)	= ON
Opening force	= individual
Delay time	= 10s
Input E1	= opening pulse (day + night) + LF
Input E2	= opening pulse (day + night)
Input E3	= day/night operation
Input E4	= opening pulse (day only)



Elektroschema MSL sFlipLock access / e-access mit smartdoor TURN

Door operator
smartdoor TURN T100

MSL sFlipLock - smartdoor TURN_Elektroschema_v2.1.vsd